

RESCALE deployment at EMOTORS

14/10/2020

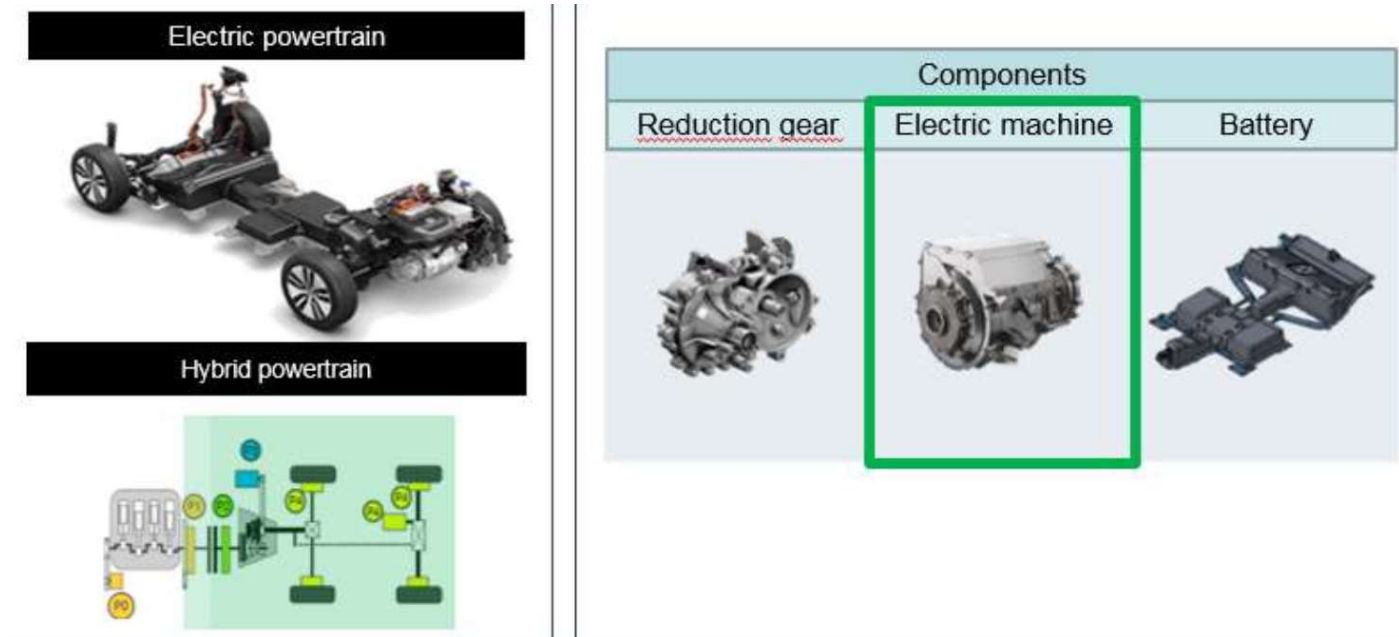
PHILIPPE PERON

philippe.peron@emotors.com



01 – Purpose

- PSA Groupe and Nidec Corp. (through its subsidiary Leroy-Somer) have decided to join forces to create a leader in electric powertrain, specializing in electric machines (engine + inverter): The Nidec PSA eMotors Joint Venture, a newly created entity 50/50 owned by both groups.



02 – Overview

- **R&D need more powerful solutions for CFD, NVH and Electro-Magnetic simulations**

- **Need (estimate)**
 - CFD : 20h/week on 128 cores
 - Electro-Magnetic : 20h/week on 16 cores
 - NVH : 20h/week on 64 cores

- **Constraints**
 - On premise solution not possible
 - No IT team (only IT Leader)
 - Rapid deployment
 - Number of hearts to validate
 - License server on site (legal constraint)

03 – Project steps

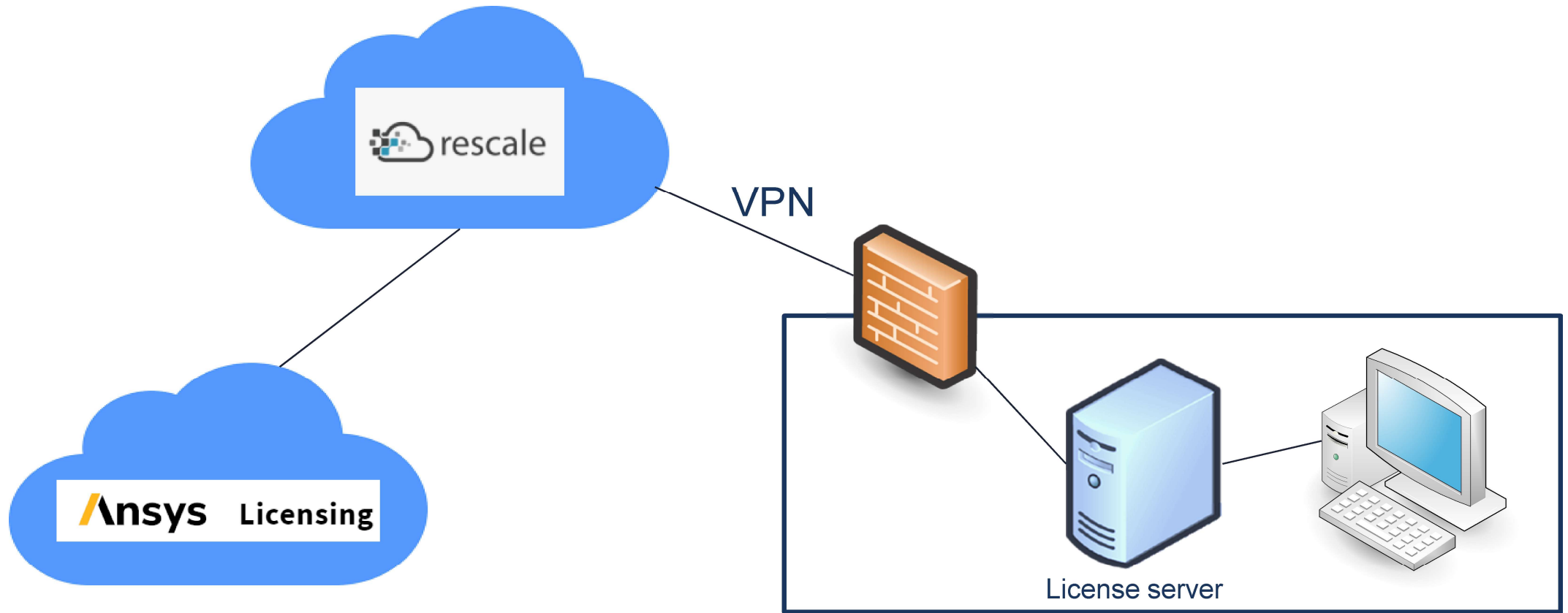
- **Pre-Study**
 - Paas : POC mandatory, schedule, RUN organization to be define
 - Saas (like RESCALE) : rapid deployment, adjustable power, RUN manage by the provider

- **Step 1 (09/2019)**
 - RESCALE subscription for 3 months
 - Lease ANSYS Elastic license (license store on ANSYS) Cloud

- **Step 2 (12/2019)**
 - Tests JMAG with temporary license

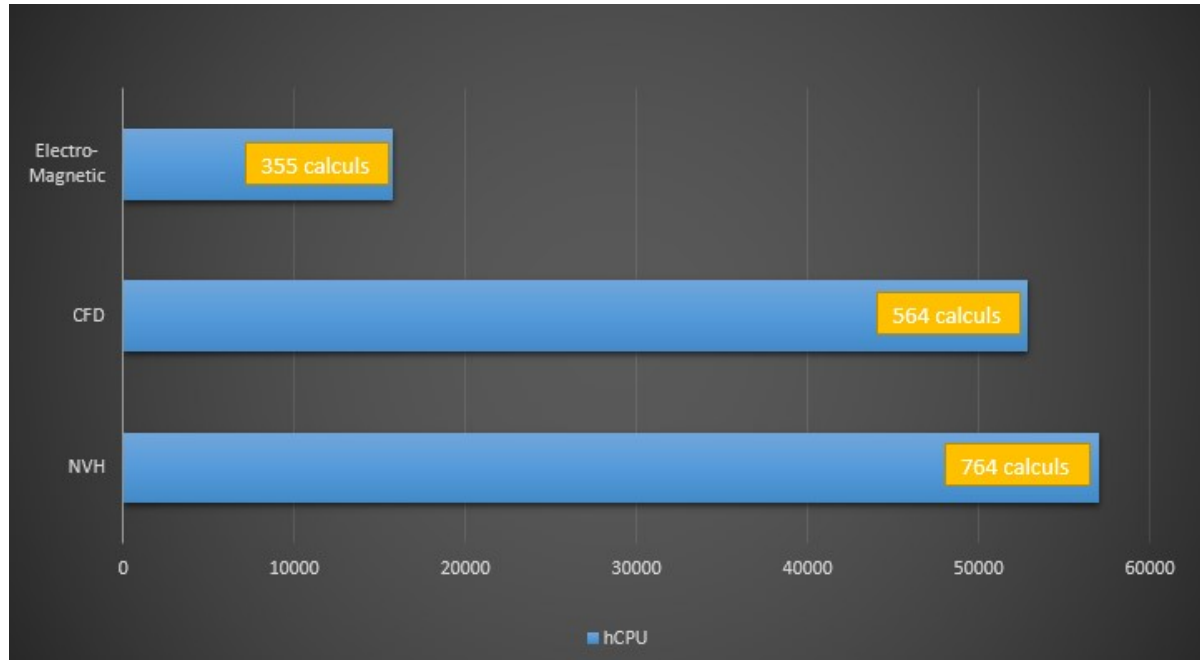
- **Step 3 (01/2020)**
 - VPN connection between license server and RESCALE
 - Open NVH and Electro-Magnetic access

04 - Technical architecture



04 – Feedback and next step

■ Feedback



■ Next step

- Storage output simulation file on the Cloud (link between simulation result and our PLM on Cloud)
- MATLAB runtime calculation (POC ongoing)