

**Oxalya**

***VisuPortal***<sup>®</sup>

- Oxalya started in 2005 as a HPC integrator
  - Offices in Paris, France
  - Systems built for energy, governmental research, aerospace, biotechnologies, ...
- Customer feedback: HPC systems are too complex to manage and use. This defined Oxalya' aim:  
**Making Simulation Access Easier**
  - Still providing integration and consultancy services
  - But now offers HPC management and usage software:



For mutualized HPC datacenters

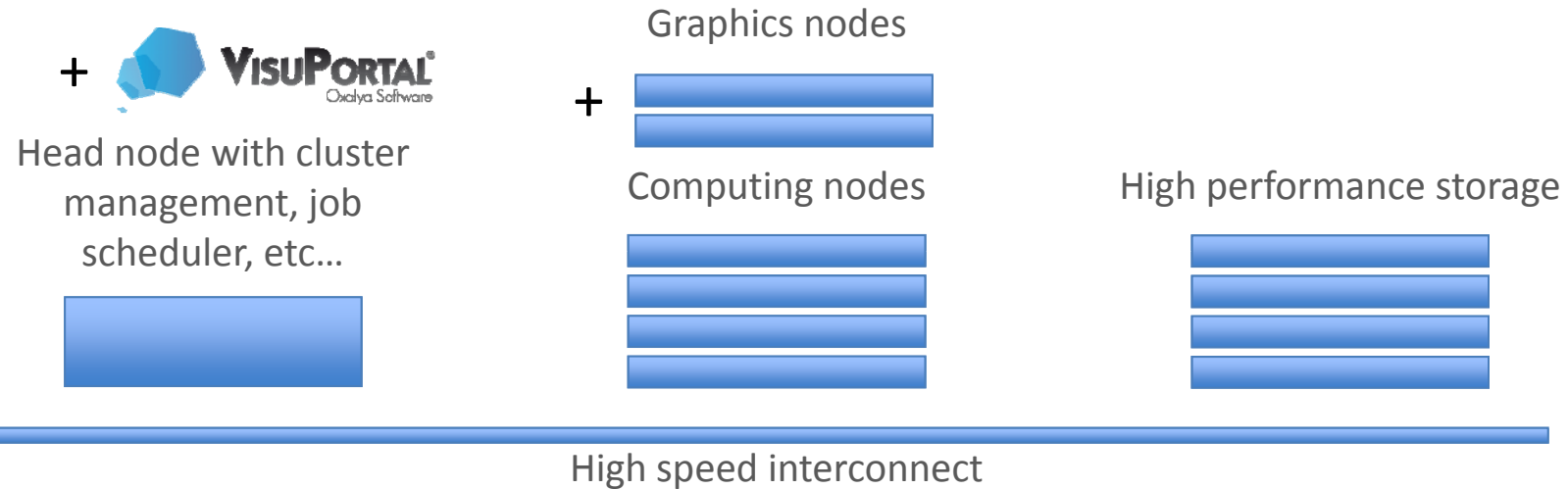


For visualization resources



- Numerical simulation has evolved...
  - More computing power and larger data sets
  - Solvers coupling
  - New visualization servers
- ... creating new possibilities/needs
  - High performance displays such as CAVEs
  - Real time monitoring of simulation projects
  - Collaborative tools to shorten the decision making process
- VisuPortal® is our solution for interactive simulation

# From a computing cluster to a simulation cluster



✓ Uses the same LDAP authentication system as the cluster

✓ Synchronizes itself with your job scheduler  
Torque/MAUI, PBS Pro, SLURM, etc.

✓ Integrates any remote desktop system  
HP RGS, TurboVNC/VirtualGL, etc.

✓ Enables using both type of nodes for both computing and visualization

**All of this remotely, from any place !**

VisuPortal® makes the access your numerical simulation chain easier through high performance visualization

Integrate your usual software: pre/post-processing, workflow, interactive computing, ...



...

Manage your visualization resources



Laptops, Thin clients,  
Wall, Cave, QuadHD,...

Optimize the ROI of your infrastructures



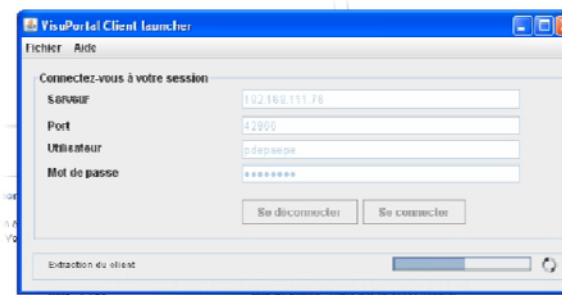
# VisuPortal® is meant for users...

VisuPortal® helps researchers to focus on their “real” work

Integrated online help  
with videos

Web reservation wizard

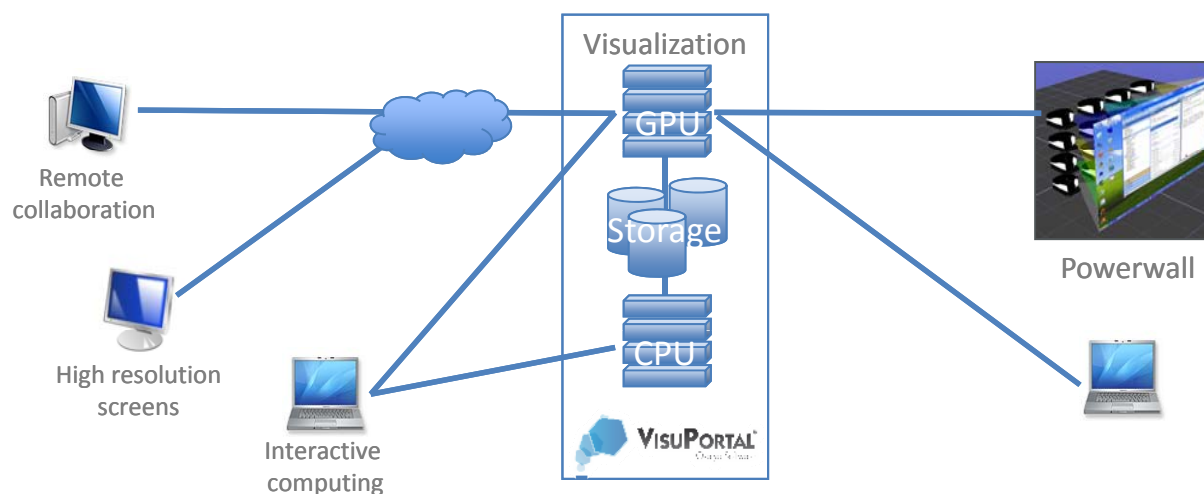
Automatic deployment of the  
remote display client without  
installation



## ...and administrators

- Easy users management
  - Visualization profiles,
  - Quotas
- Resource management
  - Computing and graphics nodes
  - License tokens
  - Exportable statistics and logs
- Fine grained application integration
  - Application launch the visualization node but also computing or rendering nodes
  - License management
  - Desktop configuration
  - Data management,
  - Etc.

- EDF Research & Development



66 visualization nodes,  
20 compute nodes

24 mega pixels  
powerwall  
16 videoprojectors

Collaborative  
scientific visualization



# Try it!

- A demo is worth a thousand words
  - Come and see us at our booth
  - You all received a free trial pass in your Teratec welcome bag
  - See demos integrating software from:



Summary		
Title	Test session	✓
Application	Paraview 3.6.2	✓
Screen Control	RGS 5.4	✓
Additional Display		
Job files	290 MB	✓
Configuration	Middle	✓
Guests	1	✓
Launch Date		

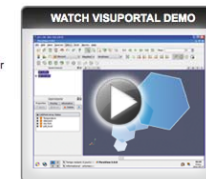


#### Interactive Simulation, just one click away

VisuPortal is an innovative remote collaborative visualization software. Deployed in your simulation infrastructures, it offers an easy and unified management of the entire simulation chain to make the most of your visualization resources: hardware, display and applications.

Learn more about our product **endless simulation capabilities** and experience a **real live interactive simulation proof of concept**.

VisuPortal is a software developed and supported by Oxalya. Oxalya mission is to Make Simulation Access Easier notably through the edition of software for the management of computing and visualization resources.





Benoît VAUTRIN

COO

[benoit.vautrin@oxalya.com](mailto:benoit.vautrin@oxalya.com)

Tel: +33 1 49 58 45 70

Gsm: +33 6 65 65 28 40